

Funktion:

LUNOR Gasfilter scheiden alle heute bekannten chemischen und bakteriologischen Kampfstoffe aus der Frischluft aus.

Fonction:

Le filtre à gaz élimine les particules chimiques et bactériologiques de gaz de combats, aujourd'hui connus.

Function:

The gasfilter give maximum Protection against all today known war gases.

Ausschreibungstext:

Gasfilter GF-150
 Marke: Lunor, G. Kull AG
 CH - 8041 Zürich
 BZS: T 89-009
 Luftmenge: 150 m3/h
 Druckverlust: 400-500 Pa
 Gewicht: ca. 65 kg

Spécification:

filtre à gas type GF-150
 marque: Lunor, G. Kull AG
 CH - 8041 Zürich
 BZS: T 89-009
 débit d'air: 150 m3/h
 charge: 400-500 Pa
 poids: env. 65 kg

Specification:

Gasfilter type GF-150
 mark: Lunor, G. Kull AG
 CH - 8041 Zürich
 BZS: T 89-009
 air rate: 150 m3/h
 press. drop: 400-500 Pa
 weight: approx. 65 kg

bestehend aus:

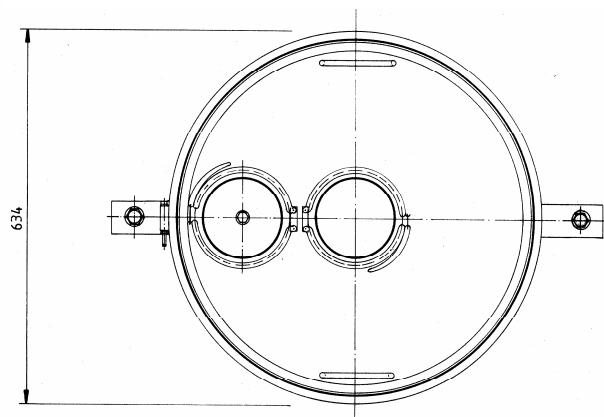
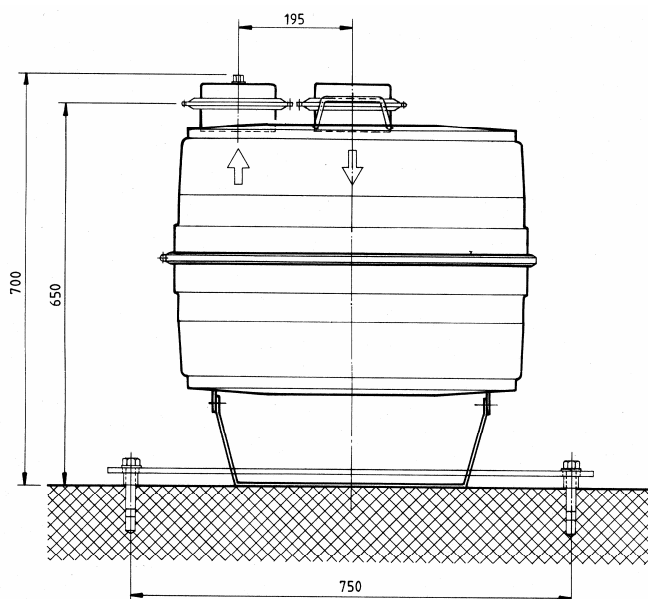
1. Filtergehäuse pulverbeschichtet
2. Schwebstoff-Filter
3. Aktivkohle-Filter
4. Lufteintrittsstutzen mit Verschluss
5. Luftaustrittsstutzen mit Verschluss
6. Druckausgleichsschraube
7. Bodenbefestigungsschiene
8. Stahldübel (bauseits)
9. Plastikhülle

se composant de:

1. boîtier du filtre
2. filtre à haute efficacité
3. filtre à charbon actif
4. entrée d'air avec fermeture rapide
5. sortie d'air avec fermeture rapide
6. vis d'équilibrage de pression
7. bare de fixation
8. tampons en acier (client)
9. housse en plastique

consisting of:

1. filter casing
2. high efficiency filter
3. activated carbon filter
4. air inlet with closing
5. air outlet with closing
6. pressure compensation screw
7. floor fastening bracket
8. steel dowels (not supplied)
9. plastic cover



Function of gasfilter

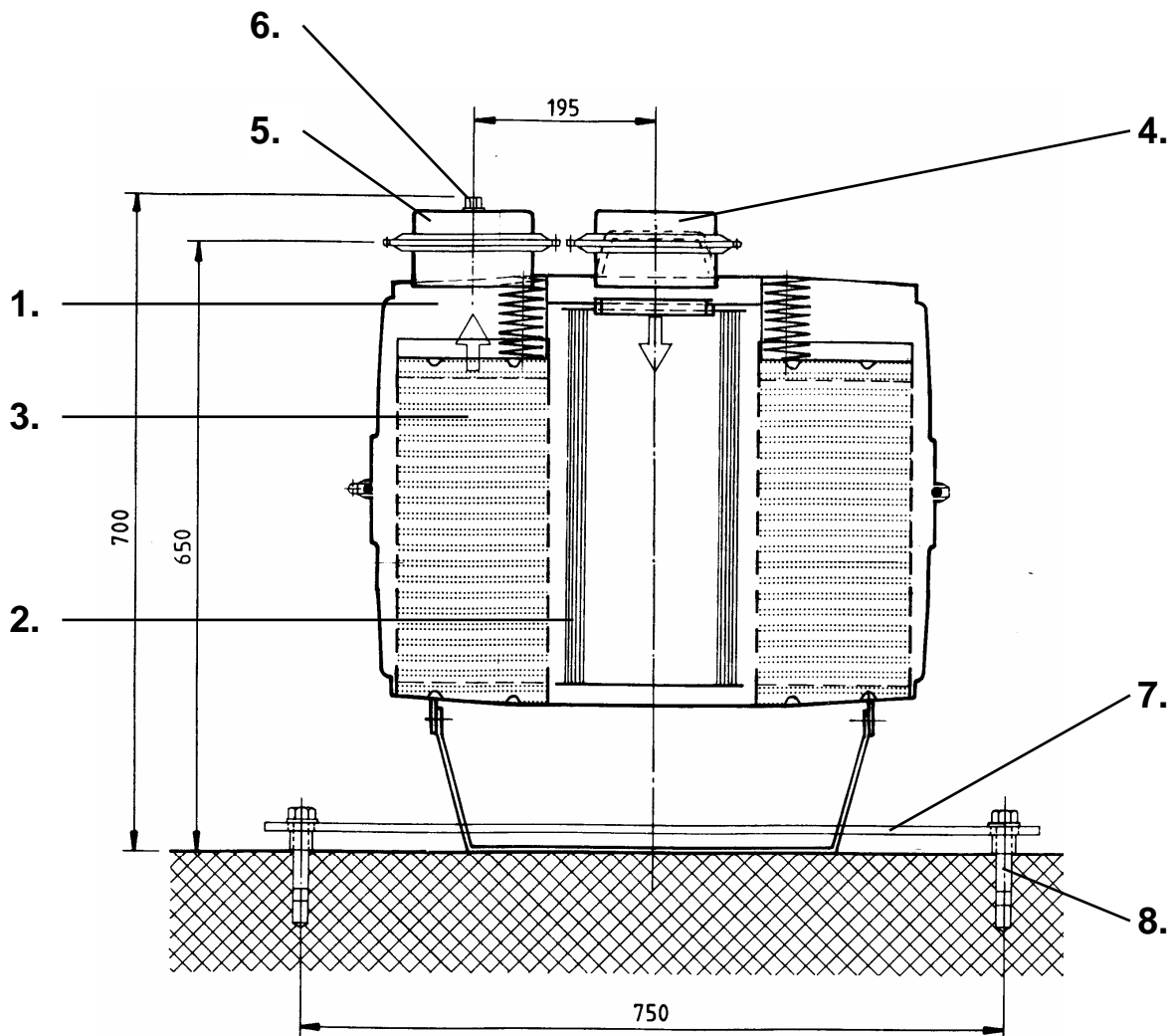
The polluted air first passes through the absolute filter which retains the finest impurities, solid and liquid as well as radioactive particles. Then the air flows through the activated carbon filter which can adsorb gases by physical and chemical action.

GF-150

sectional drawing

consisting of:

1. filter casing
2. high efficiency filter
3. activated carbon filter
4. air inlet with closure
5. air outlet with closure
6. pressure compensation screw
7. floor fastening bracket
8. steel dowels
9. plastic cover



Proviso for technical change