

## Outside closure with 1 and 3 bar protection

### Specification:

**Supplier:** LUNOR, G.Kull AG  
CH-8041 Zurich

Design and production according to technical regulations of the Swiss Federal Office of Civil Defence

Consisting of:

Door leaf in steel profile frame with rubber seal on all sides and welded-in reinforcement, removable lever locks on both sides. Internal levers with locking pin against accidental opening, air blast and ground shock vibration. Door frame in angular profile with massive anchors and double hinges. Steel parts not to be covered with concrete, coated with primer.

### Armoured door, type PT-1

BZS-Nr. 74 PT-1

Frame dimensions:

Inner width: 80 cm  
Inner height: 185 cm  
Door thickness: 20 cm  
Protection level: 3 bar  
Weight without concrete: 205 kg

### Armoured door, type PT-2

BZS-Nr. 74 PT-2

Frame dimensions:

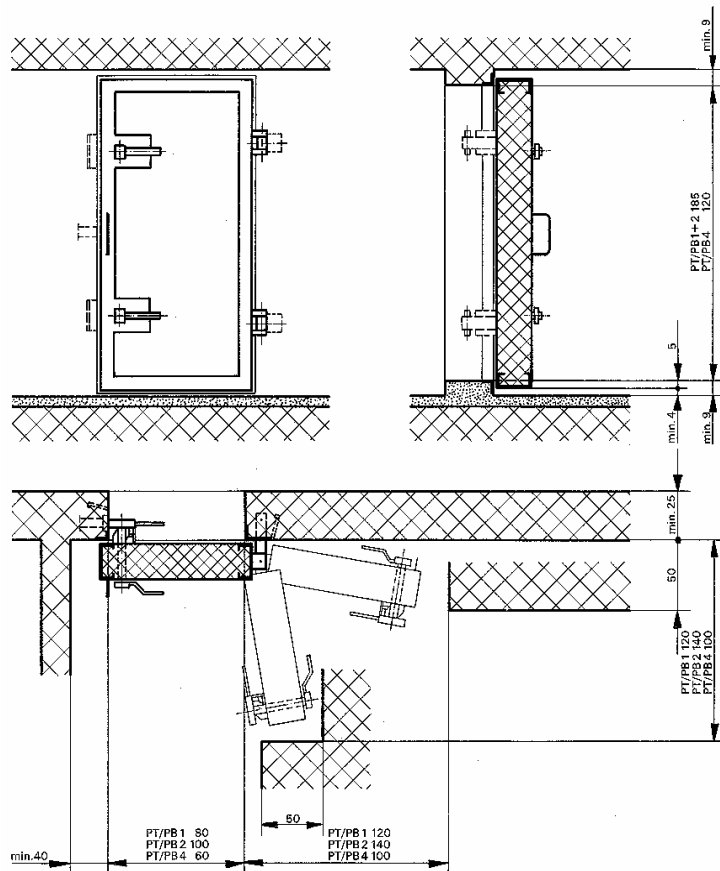
Inner width: 100 cm  
Inner height: 185 cm  
Door thickness: 20 cm  
Protection level: 3 bar  
Weight without concrete: 250 kg

### Armoured door, type PT-4

BZS-Nr. 74 PT-4

Frame dimensions:

Inner width: 60 cm  
Inner height: 120 cm  
Door thickness: 20 cm  
Protection level: 3 bar  
Weight without concrete: 170 kg



### Installation requirements:

PT and PTO-doors always open towards the outside (against air blast)

All doors should have a 4 cm free space both above the floor and under the ceiling

The doors and covers with their frames and anchors are to be placed in the forms in such a way that they are securely in place. Cast wall first. Only when the wall concrete has sufficiently set may the door leaf be filled with concrete and it is important that the door and cover leaves are closed and underpinned during the pouring of concrete. The distal pieces fixed to the locking device near the rubber seal guarantee the proper closing function.

Further details are given in the technical directives for installation, which are included with each delivery.

Modifications reserved

## Outside closure with 1 and 3 bar protection

### Specification:

**Supplier: LUNOR, G.Kull AG**  
CH-8041 Zurich

Design and production according to technical regulations of the Swiss Federal Office of Civil Defence..

Consisting of:

Door leaf in steel profile frame with rubber seal on all sides and welded-in reinforcement, removable lever locks on both sides. Internal levers with locking pin against accidental opening, air blast and ground shock vibration. Door frame in angular profile with massive anchors and double hinges. Steel parts not to be covered with concrete, coated with primer.

### Armoured door, type PT-3

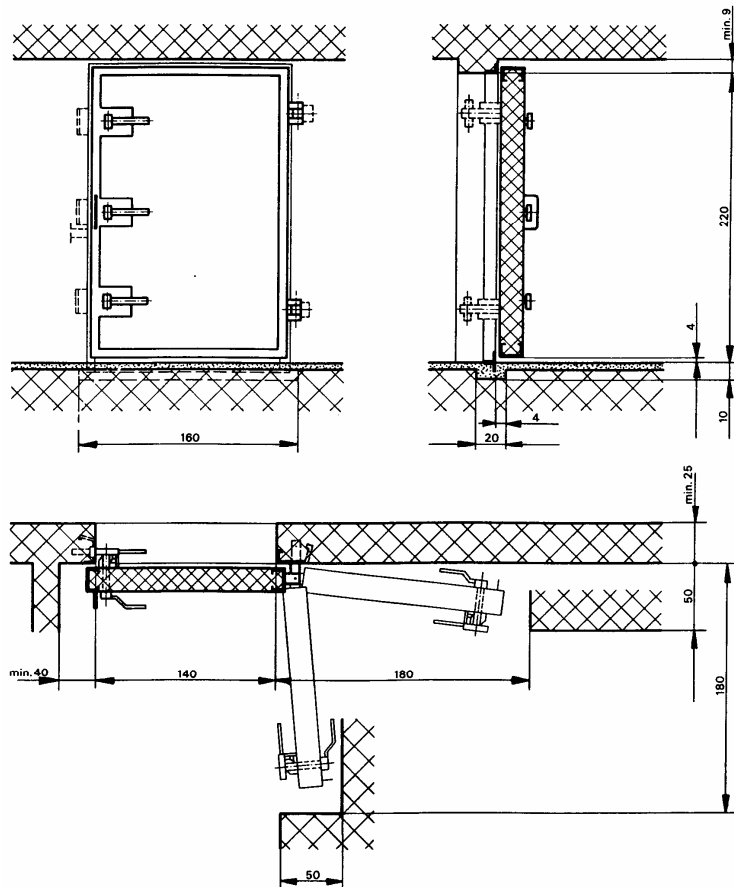
BZS-Nr. 74 PT-3

With removable door sill.

Frame dimensions:

Inner width:	140 cm
Inner height: <sup>1)</sup>	220 cm
Door thickness:	20 cm
Protection level:	3 bar
Weight without concrete:	480 kg

<sup>1)</sup> Dimension if door sill is removed



### Installation requirements:

PT and PTO-doors always open towards the outside (against air blast)

All doors should have a 4 cm free space both above the floor and under the ceiling

The doors and covers with their frames and anchors are to be placed in the forms in such a way that they are securely in place. Cast wall first. Only when the wall concrete has sufficiently set may the door leaf be filled with concrete and it is important that the door and cover leaves are closed and underpinned during the pouring of concrete. The distal pieces fixed to the locking device near the rubber seal guarantee the proper closing function.

Further details are given in the technical directives for installation, which are included with each delivery.

### Important !

When ordering please state hinged side (left or right when viewed from outside)

Modifications reserved