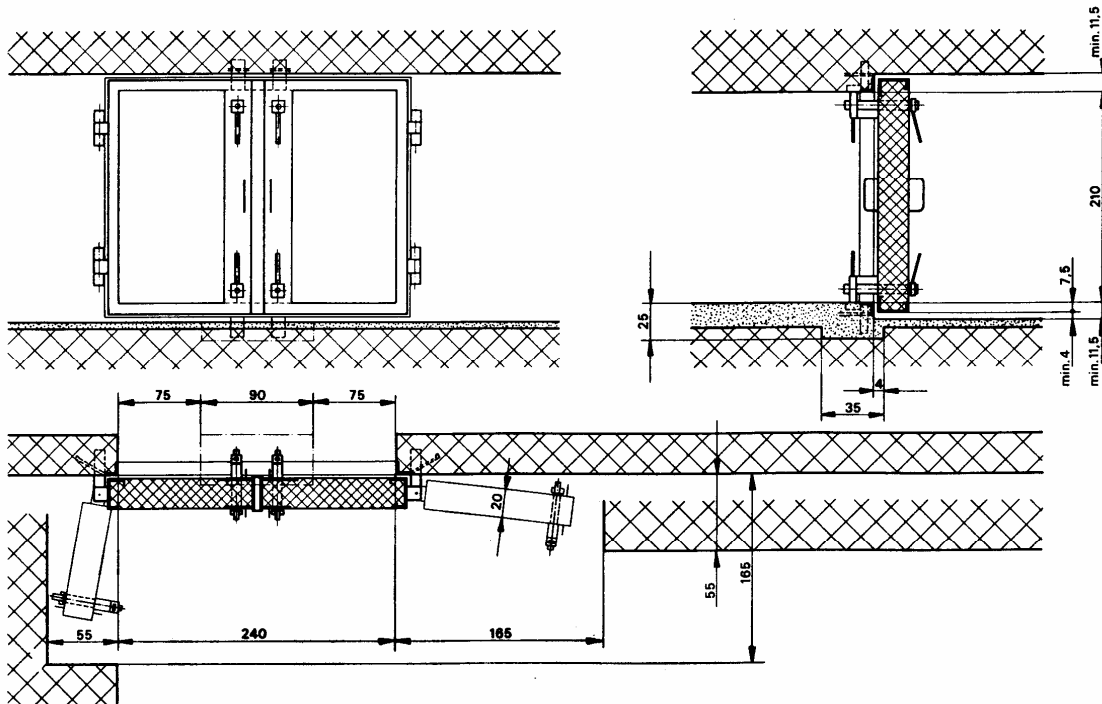


## Outside closure with 1 bar protection

**Specification:**

**Supplier:** LUNOR, G.Kull AG  
CH-8041 Zurich

Design and production according to technical regulations of the Swiss Federal Office of Civil Defence..

Consisting of:

Door leaf in steel profile frame with rubber seal on all sides and welded-in reinforcement, removable lever locks on both sides. Internal levers with locking pin against accidental opening, air blast and ground shock vibration. Door frame in angular profile with massive anchors and double hinges. Steel parts not to be covered with concrete, coated with primer.

**Armoured door, type PTO**  
BZS-Nr. 74 PTO

Frame dimensions:

Inner width: 240 cm  
Inner height: 210 cm  
Door thickness: 20 cm  
Protection level: 1 bar  
Weight without concrete: 800 kg

Modifications reserved

**Installation requirements:**

PT and PTO-doors always open towards the outside (against air blast)

All doors should have a 4 cm free space both above the floor and under the ceiling

The doors and covers with their frames and anchors are to be placed in the forms in such a way that they are securely in place. Cast wall first. Only when the wall concrete has sufficiently set may the door leaf be filled with concrete and it is important that the door and cover leaves are closed and underpinned during the pouring of concrete. The distal pieces fixed to the locking device near the rubber seal guarantee the proper closing function.

Further details are given in the technical directives for installation, which are included with each delivery.