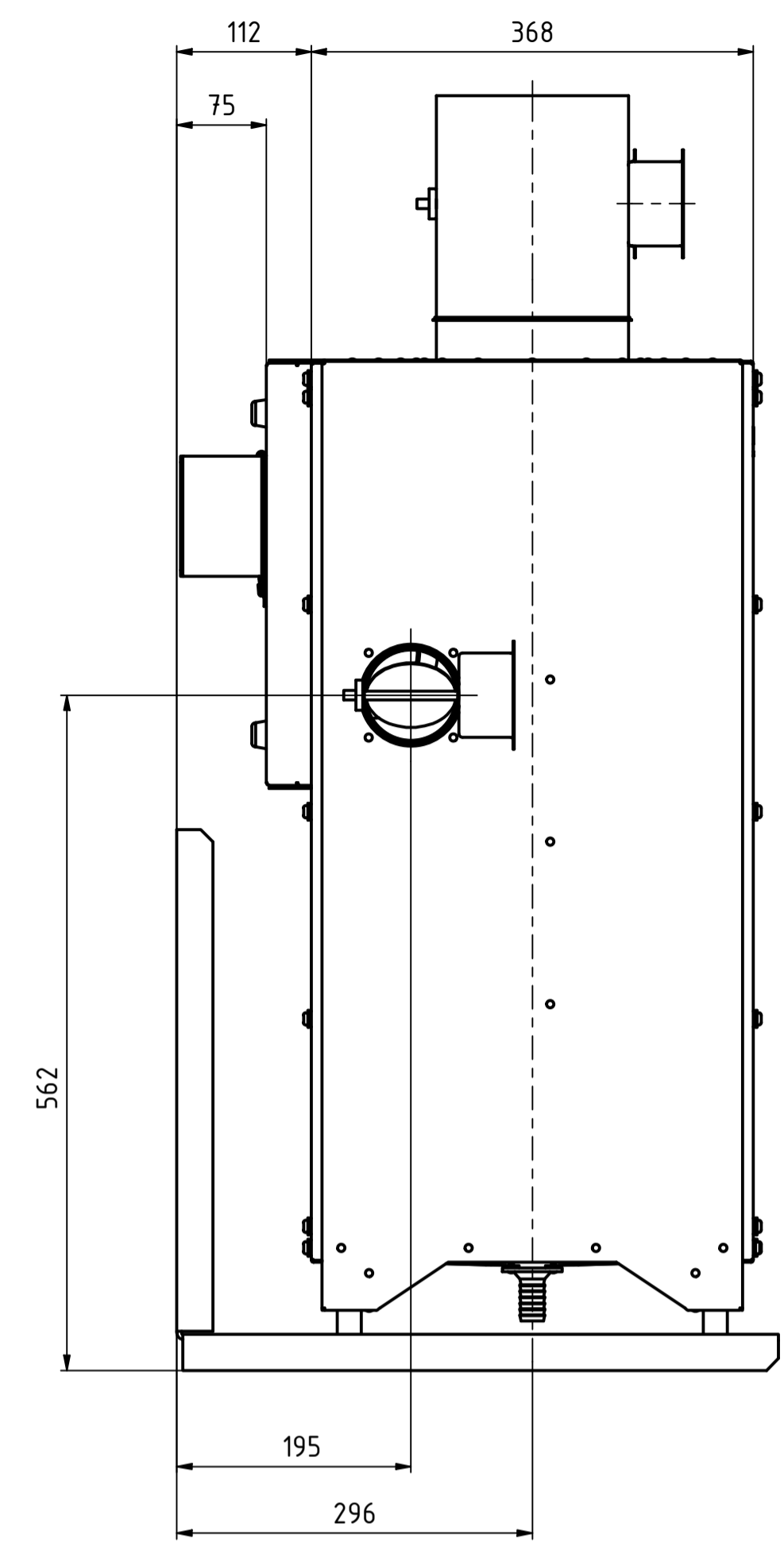
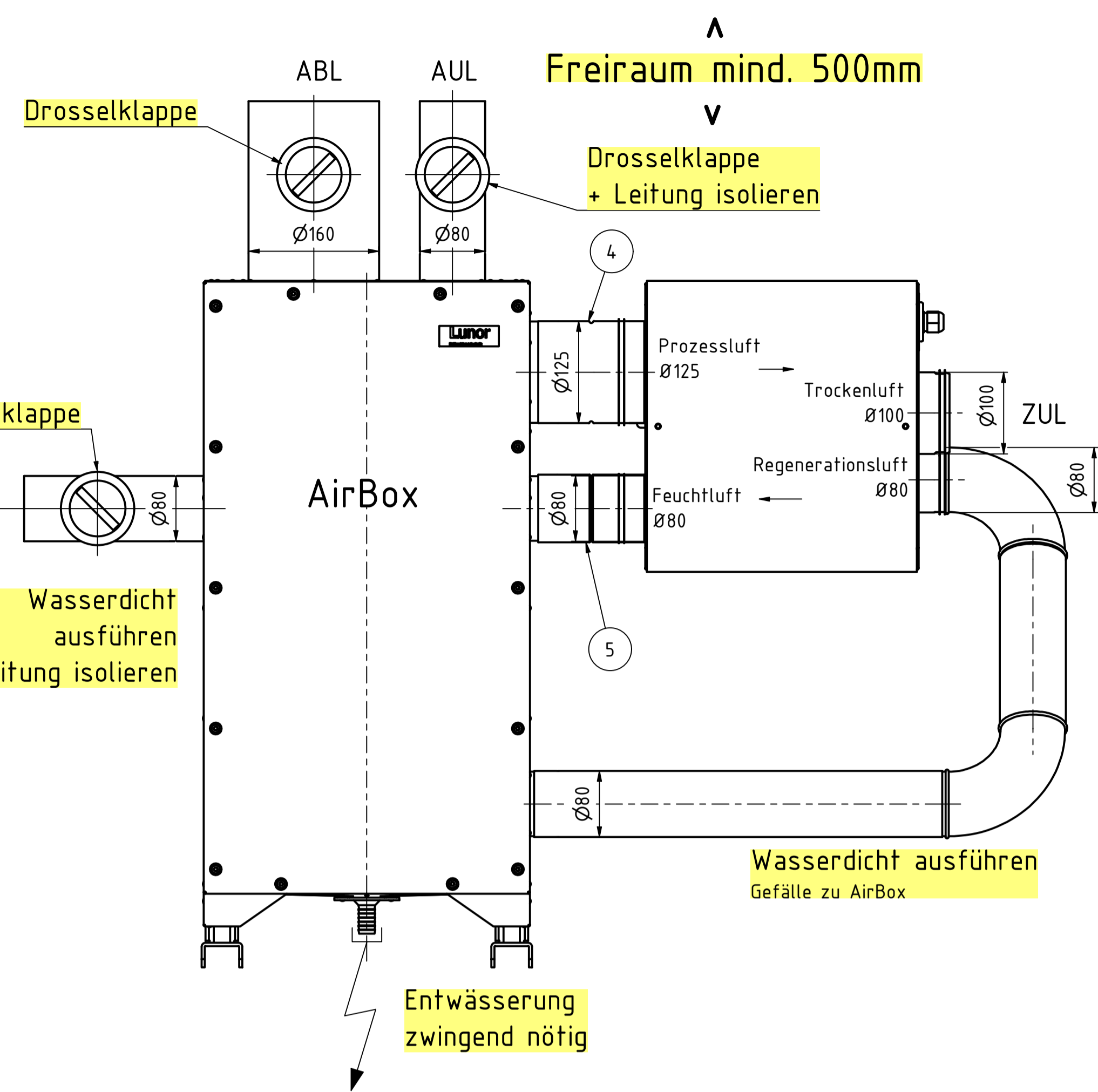
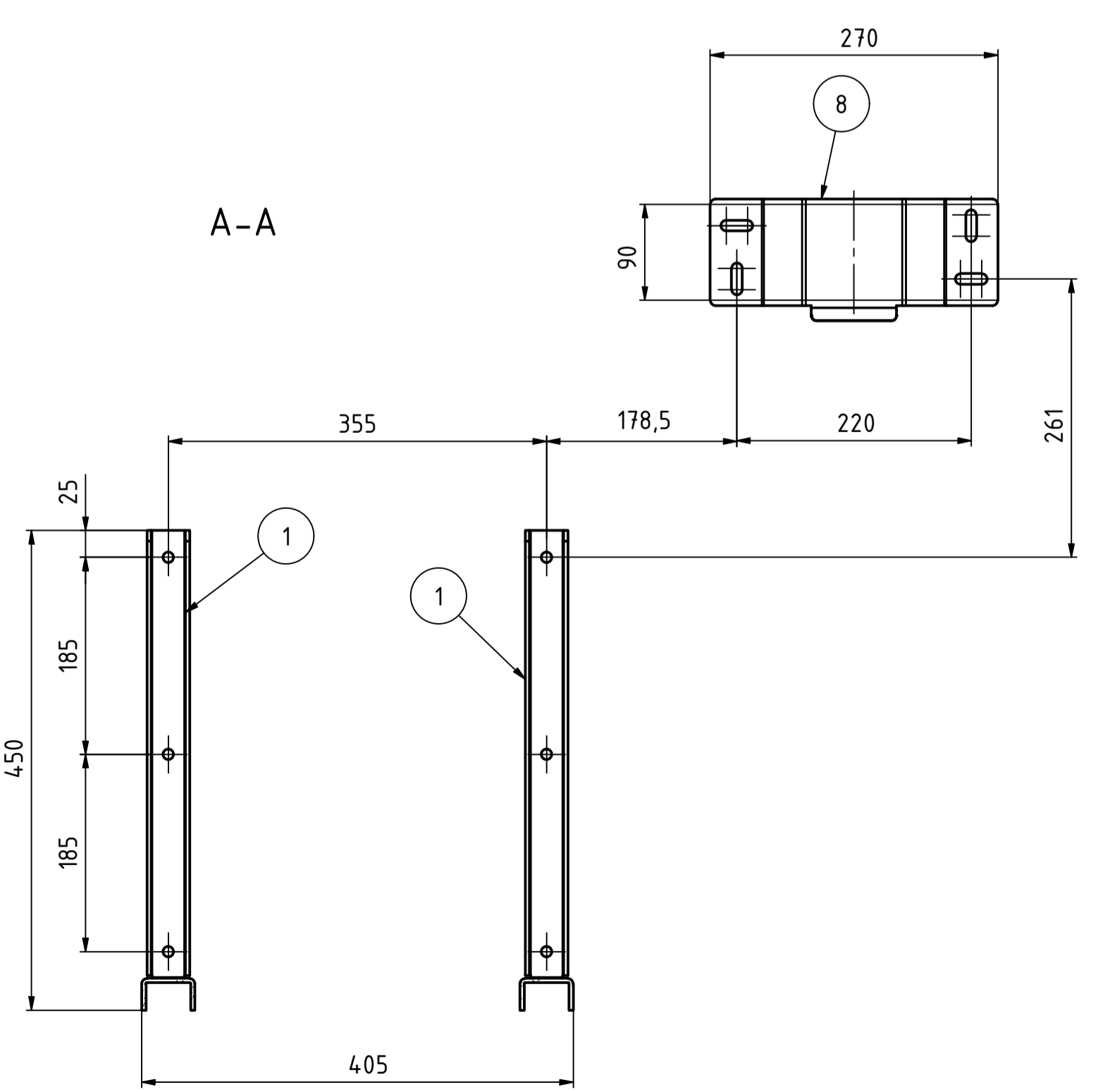
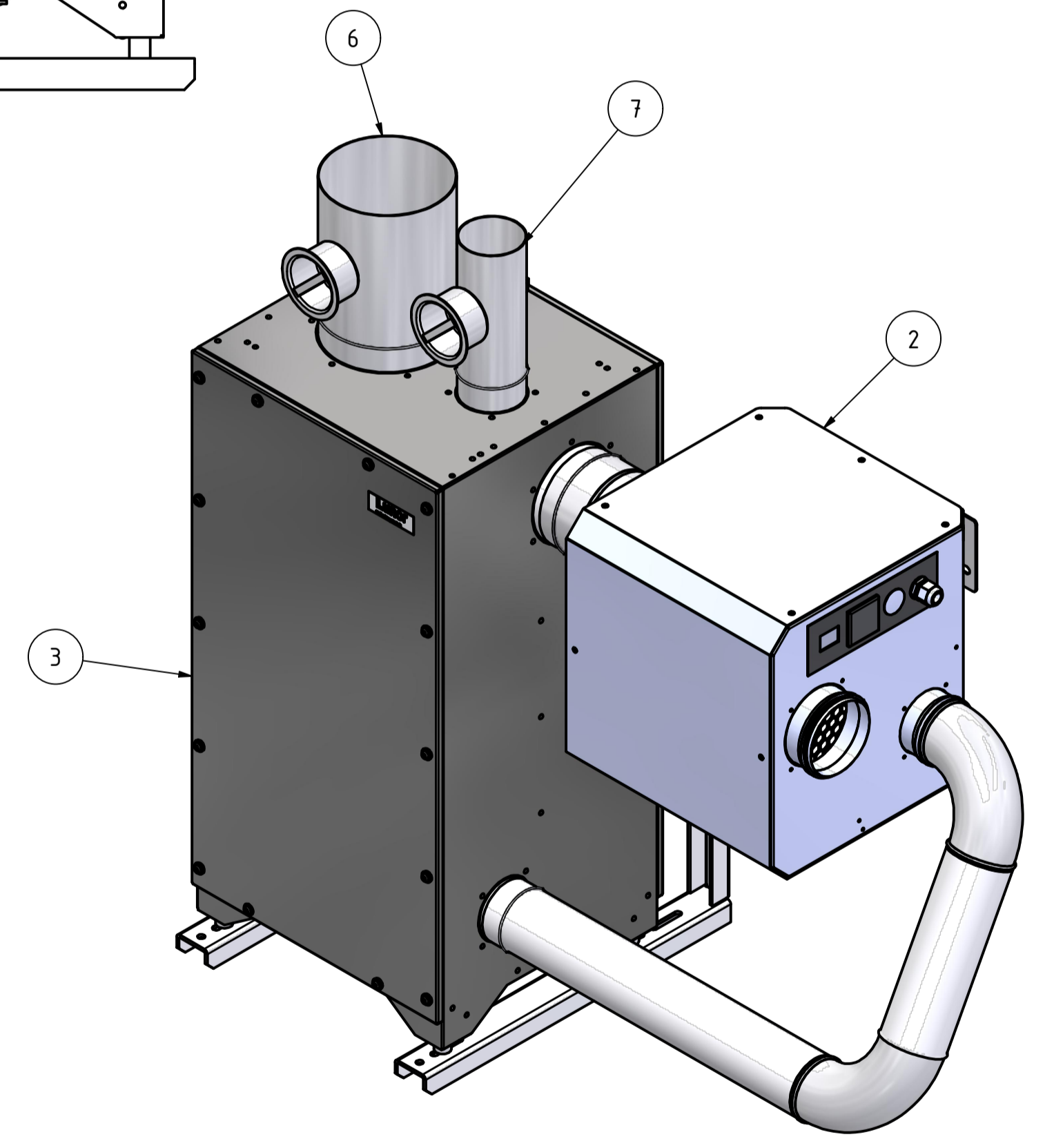
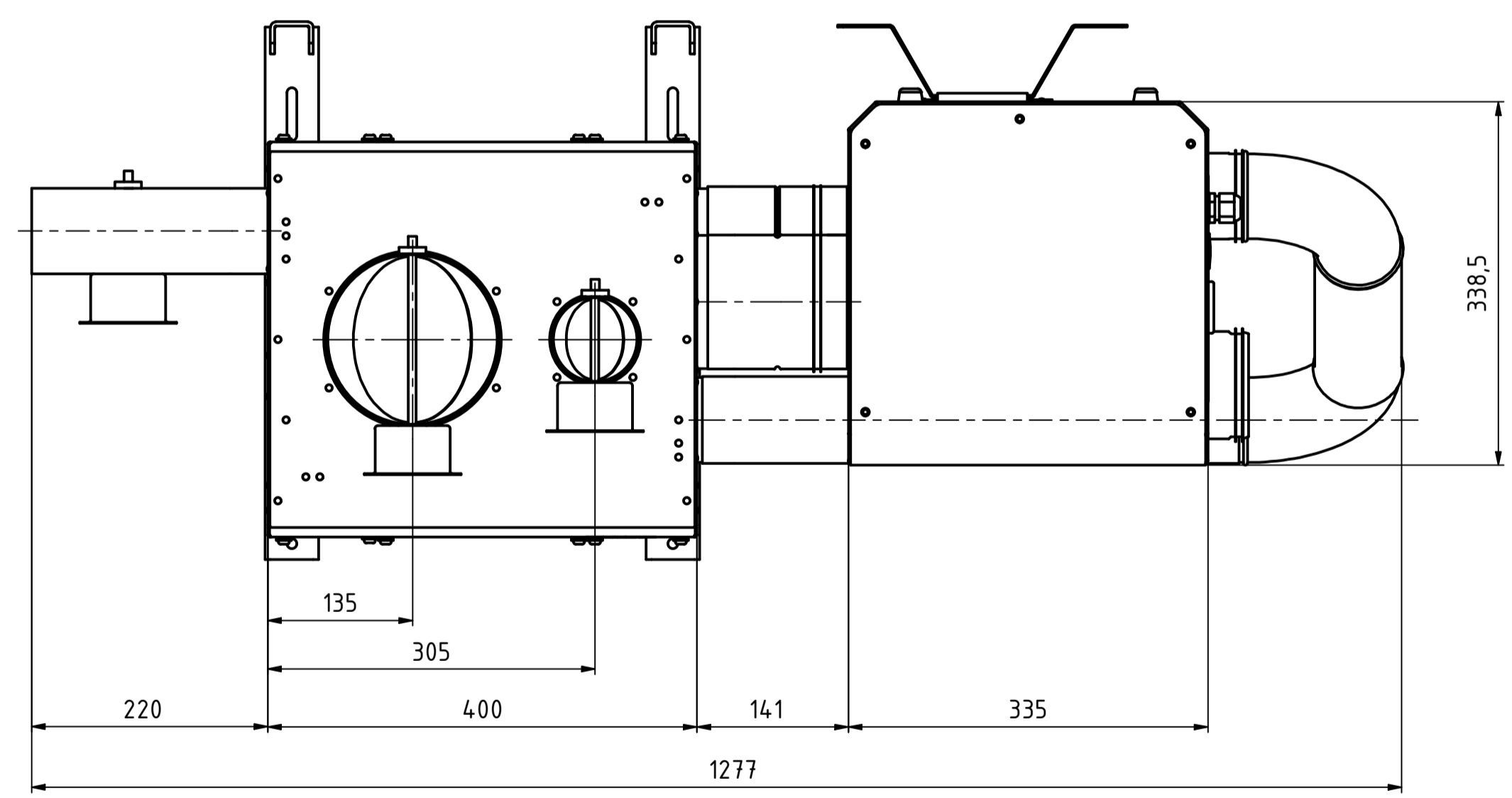
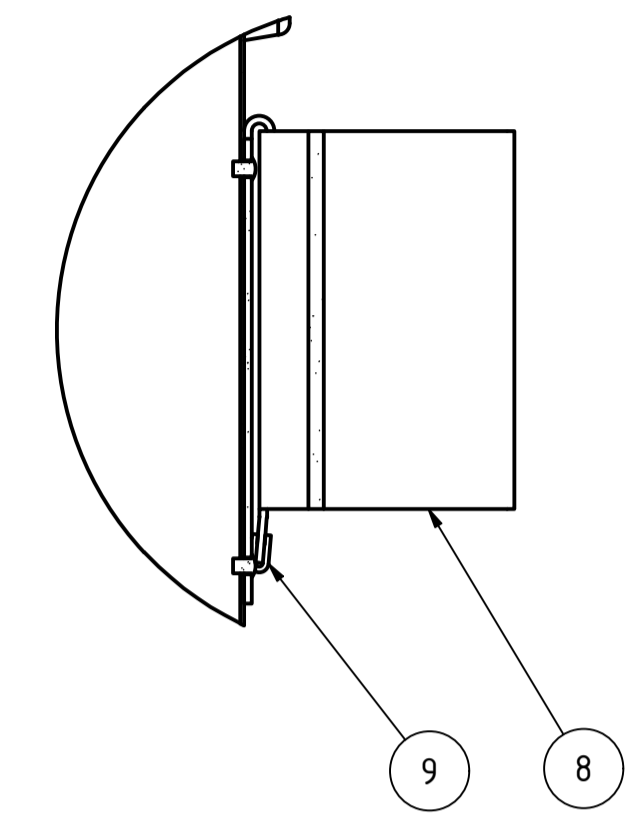


A



B (1:2)



Montagehinweise beachten!

Pos	Gegenstand	Stk.	Material	Bemerkung
1	Wandkonsole (Konsole L)	2	Stahl verzinkt	2002
2	DT210 neo Nacharbeit	1		
3	Airbox zu DT210 neo	1		
4	Muffe (VBR) NW125 - 130	1	Stahl verzinkt	
5	D80 VBR	1	Stahl	
6	Drosselklappe NW160	1	Stahl verzinkt	
7	Drosselklappe NW80	2	Stahl verzinkt	
8	Montageblech	1	Stahl	
9	Kantenschutz	1	EPDM 65 Shore A, schwarz	

Material / Material	Rohmaterial / Row Material	Oberfläche / Surface	Gewicht / Mass
Montageanleitung für Lunor DT210 neo			
Adsorptionstrockner mit AirBox			
Blatt / Feuille	A1	Gezeichnet / Drawn	Datum / Date
1 / 1	1 / 1	30.08.2022	yun
Geändert / Changed		27.10.2022	trs
Massstab / Scale	1:5	Artikelnummer / Item Number	587.000.100.0
Produkt / Product	DT210	Bauteilnummer / Part Number	102093
LUNOR G. Kull AG Allmendstrasse 127, 8041 Zürich Tel. 044 / 488 66 00, Fax 044 / 488 66 10		Rev.	b